

Discover the Full Potential of the Odyssey[®] M

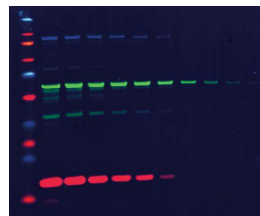
The Odyssey M is unmatched in versatility, performance, technology, and scientific expertise.



Specifications

- sCMOS line-scanning technology with optional CCD
- >6 logs of dynamic range in a single acquisition
- 5, 10, 20, 50, or 100 μ m resolution
- Up to 19 total channels:
 - Near-infrared and visible fluorescence, chemiluminescence, epi, trans, and true RGB

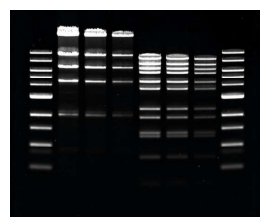
Dozens of supported and cited assays:



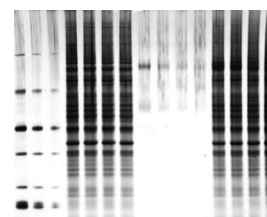
3-Color Western Blots



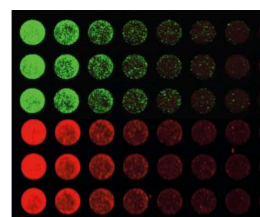
Chemi Western Blots



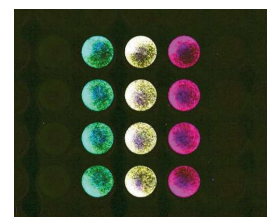
Nucleic Acid Gels



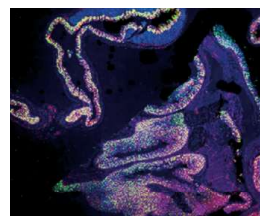
Protein Gels



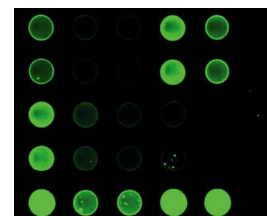
GFP and RFP Imaging



In-Cell Western™ Assays



Fluorescent and H&E Slides



Protein Arrays and Dot Blots

and many more!



Scan to Learn More
about the Odyssey M!

Please join us for a demo!

Tuesday May 20th

10h-11h: Technical seminar

Sala de audiovisuales

From 11h: Demo with your samples

Laboratorio de citometría

For more information:

antonio.peteira@licorbio.com